



DC and Pulse Reverse power supply



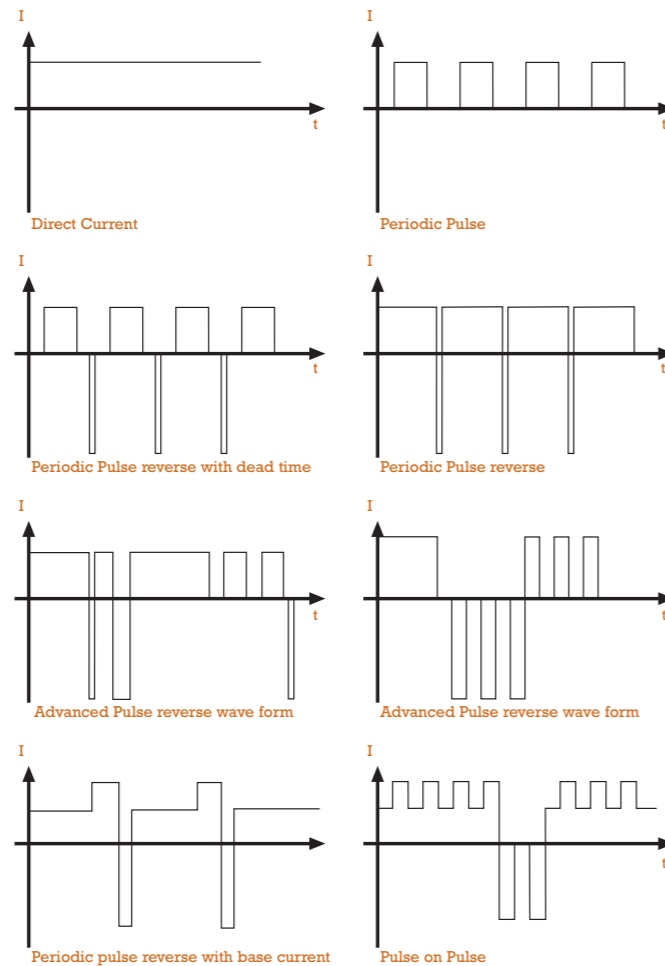
Innovative and flexible AxD series for High Performance plating applications
Visual Plating Controller

AMERICAN PLATING POWER



A2D 1000/3000 LV8

AxD wave forms

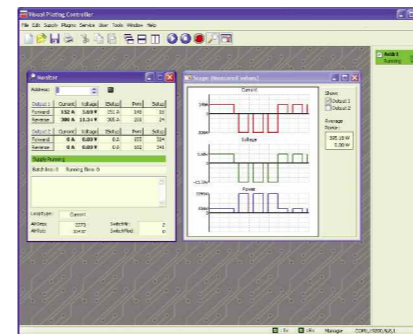


Innovative and flexible AxD series for High Performance Applications

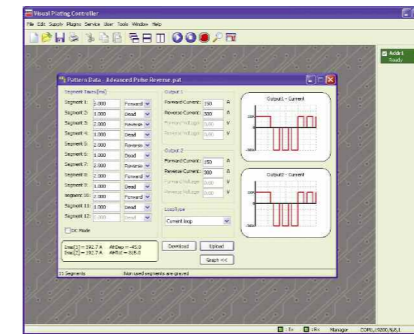
- Superb output power to accommodate any chemistry and PCB design
- Intelligent Pulse Optimization System for better pulse shapes
- Perfect fit into demanding plating applications like Printed Circuit Boards
- High performance in demanding General Metal Finishing application
- Cost effective and productive in Copper Metal Finishing applications
- Multi-output design to achieve a perfect current distribution

Munk Visual Plating Controller Software

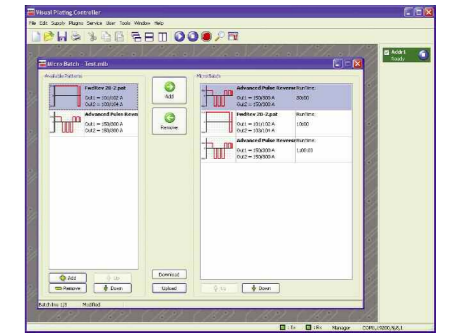
VPC Monitor overview window (Picture A)



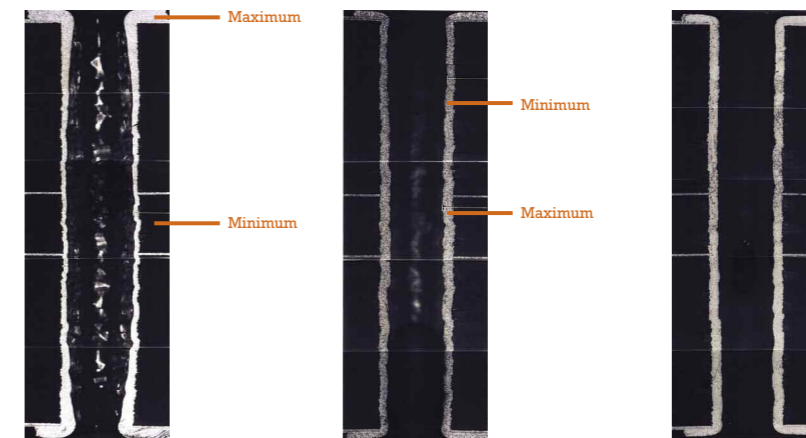
VPC waveform visual programming (Picture B)



Easy visual batch programming (Picture C)



- Windows® compatible platform
- Easy to use graphical interface.
- Enhanced programming, monitoring and logging
- With a single mouse click, programmed pulse patterns can be added to a batch program.
- One VPC system manages up to 32 AxD units



- Conventional DC operation
Process Time : T = 70 min
- Reverse Pulse Plating operation with unfavourable pulse pattern
Process Time : T = 70 min
- Reverse Pulse Plating with MUNK power supply AxD 1200/3600LV8
Process Time : T = 50 min

dino-graphics.de | 05.05 | 500 | DD

